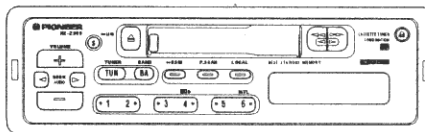


# Service Manual

**PIONEER**  
The Art of Entertainment

● KE-2900/EW



ORDER NO.  
CRT1647

CASSETTE CAR STEREO WITH FM/MW/LW ELECTRONIC TUNER

**KE-2900SDK** GR  
**KE-2900** EW,IT  
**KE-2910** EE  
**KE-1900SDK** GR  
**KE-1900** EW,IT  
**KE-1910** EE

## NOTE:

- See the separate manual CX-197(CRT1328) for the cassette mechanism description.
- Dolby noise reduction manufactured under license from Dolby Laboratories Licensing Corporation. "Dolby" and the double-D symbol are trademarks of Dolby Laboratories Licensing Corporation.
- The cassette mechanism assy employed in this model is one of X-1M series.

## CONTENTS

### CHAPTER 1

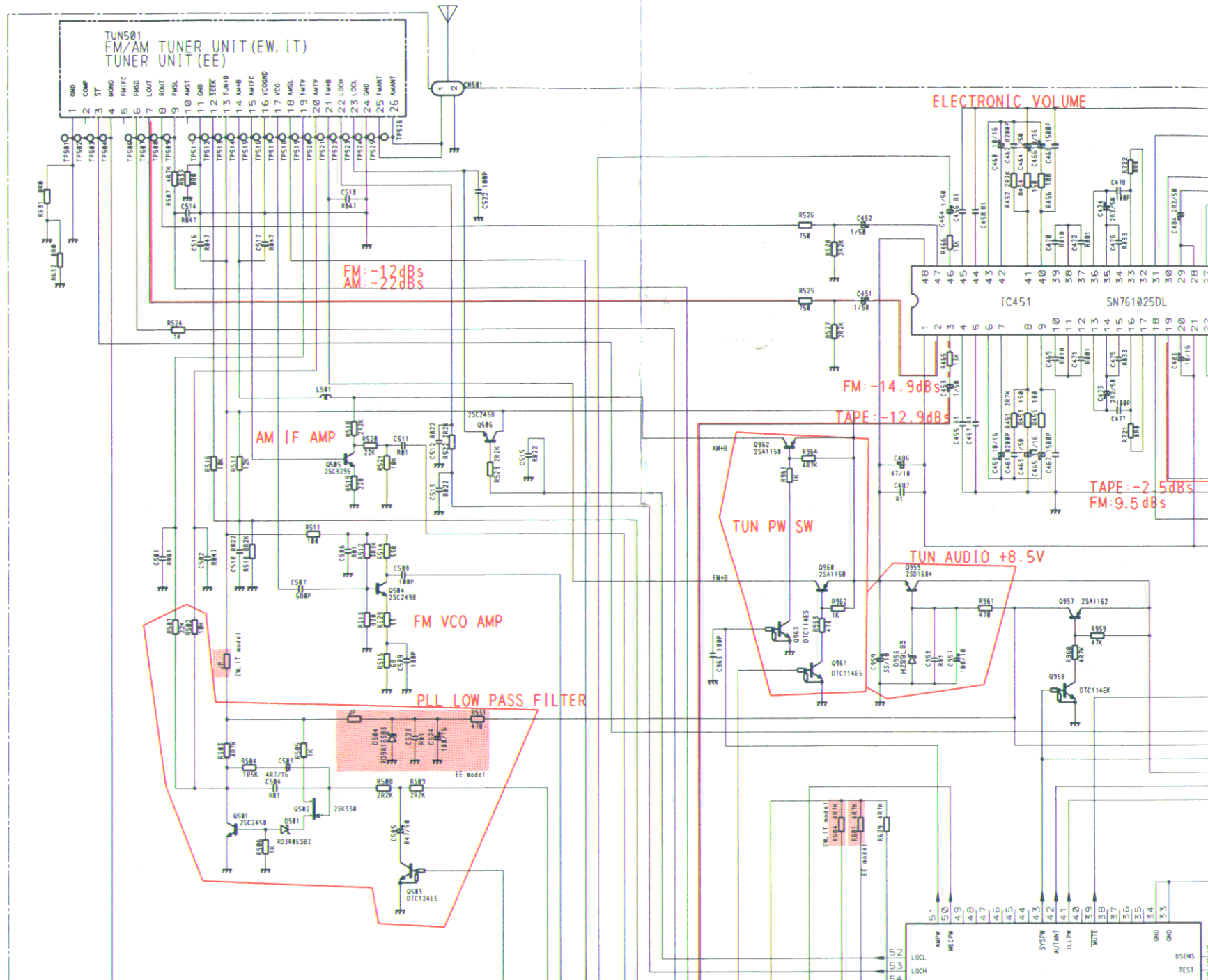
1. SPECIFICATIONS .....1-2
2. OPERATIONS AND CONNECTION .....1-2
3. ADJUSTMENT .....1-8
4. DISASSEMBLY .....1-10
5. ELECTRICAL PARTS LIST .....1-16

### CHAPTER 2

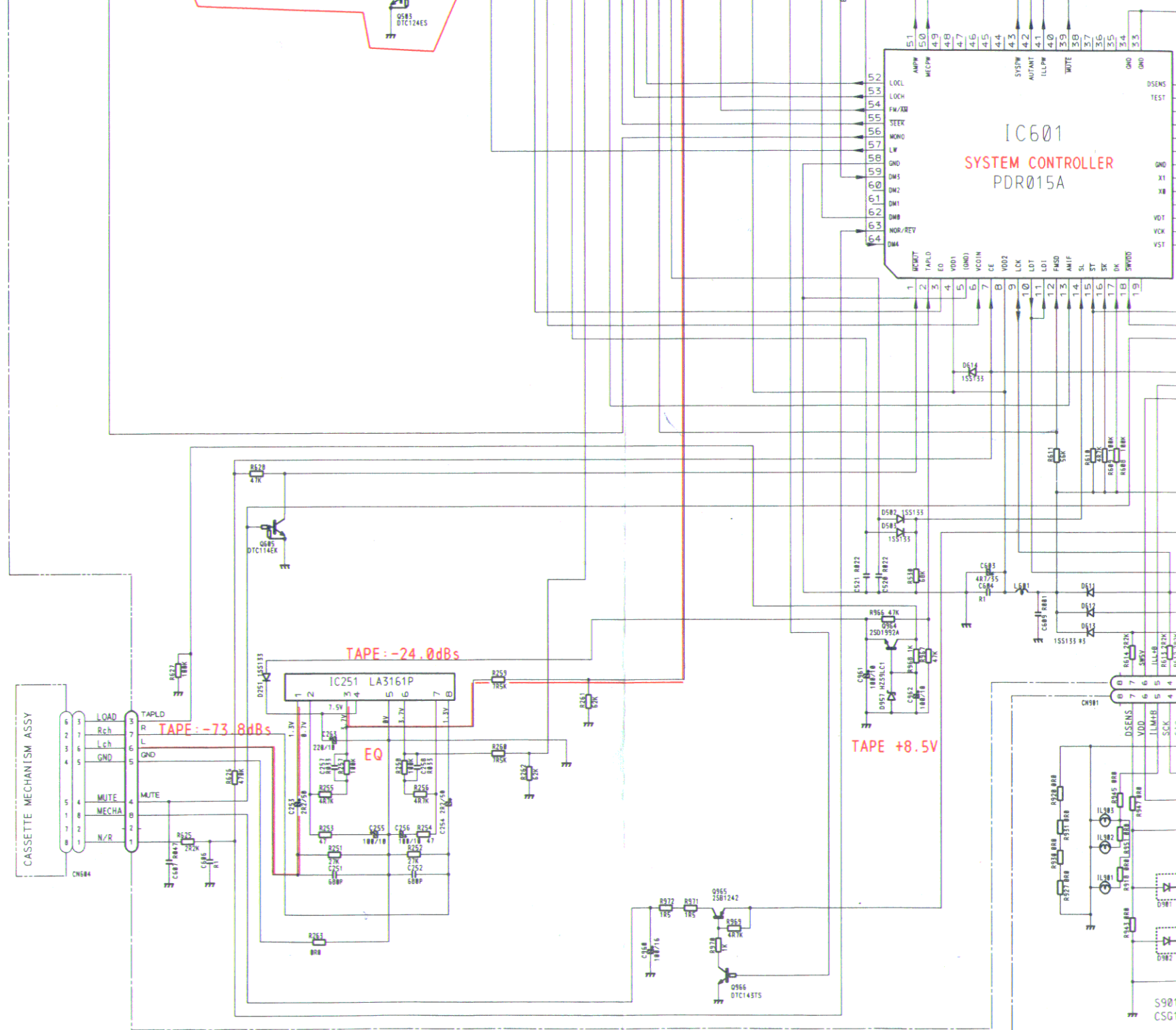
1. PACKING METHOD .....2-3
2. CIRCUIT DIAGRAM AND PATTERN .....2-7
3. EXPLODED VIEW .....2-43
4. CASSETTE MECHANISM ASSY  
EXPLODED VIEW .....2-46
5. BLOCK DIAGRAM .....2-50

# 2.4 TUNER AMP ASSY, KEY BOARD UNIT, CASSETTE MECHANISM ASSY(KE-1900/EW, IT, KE-1910/EE)

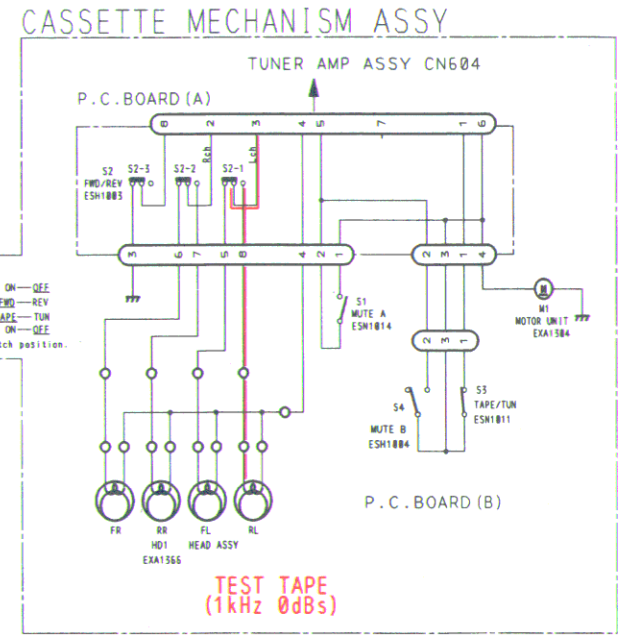
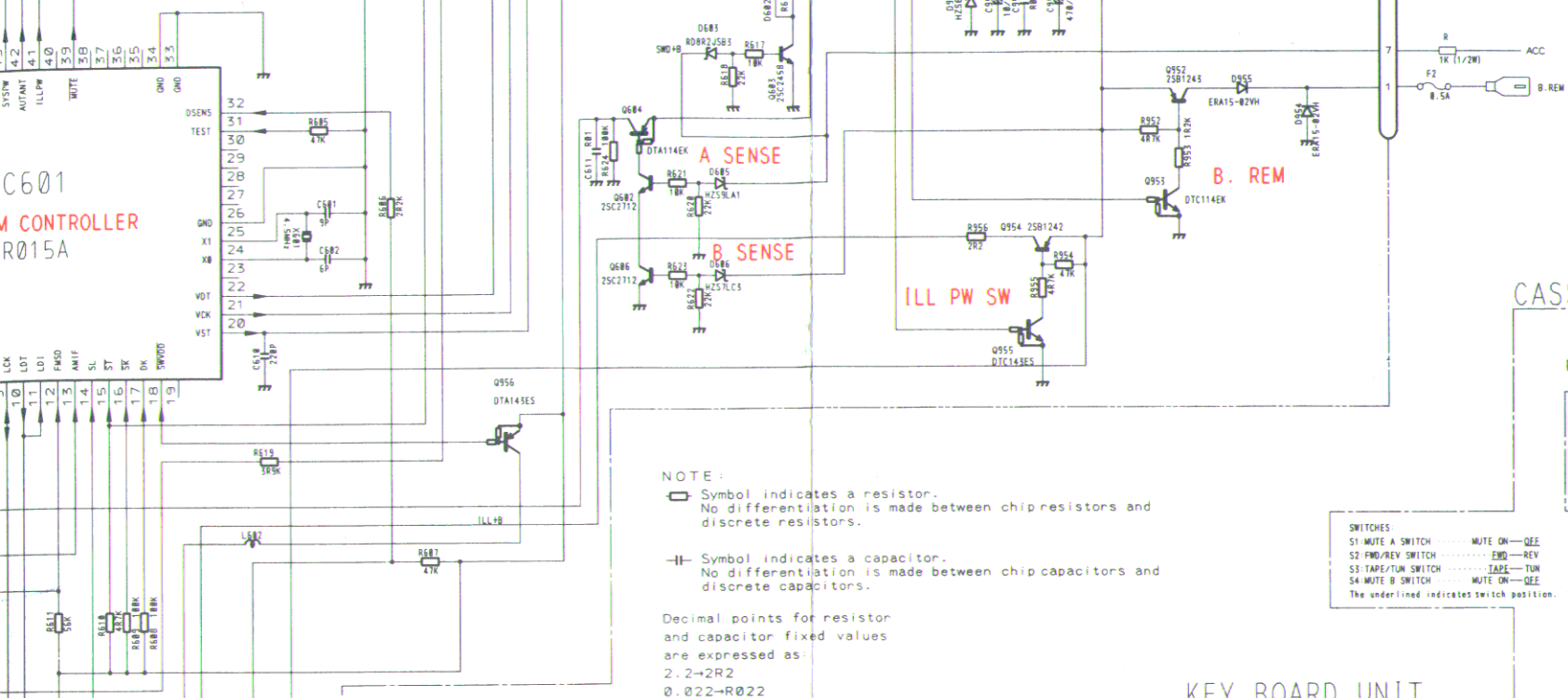
## ● Circuit Diagram





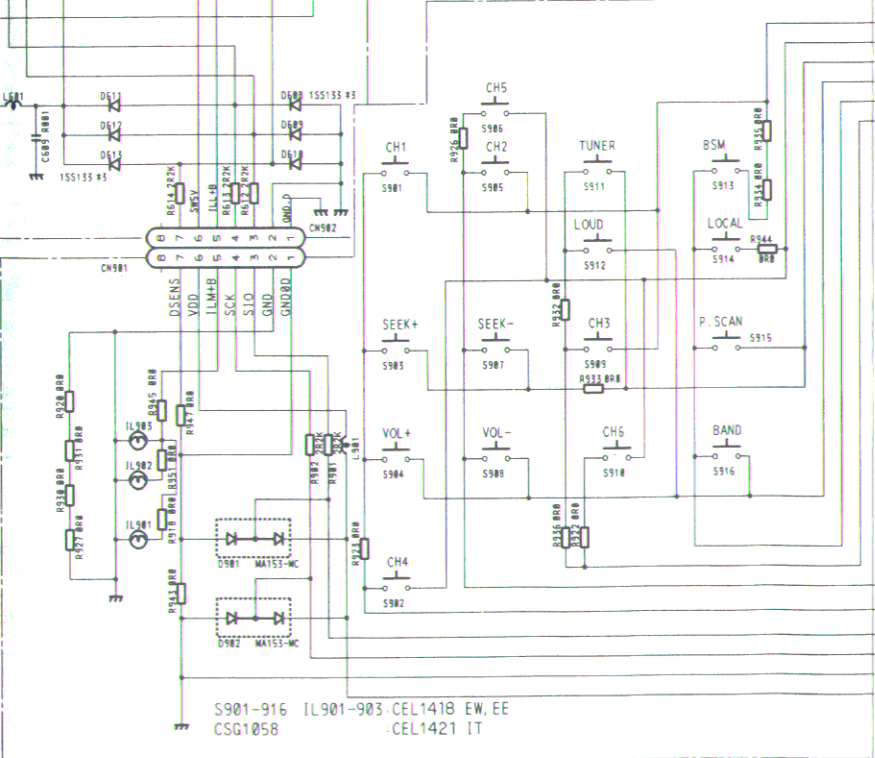
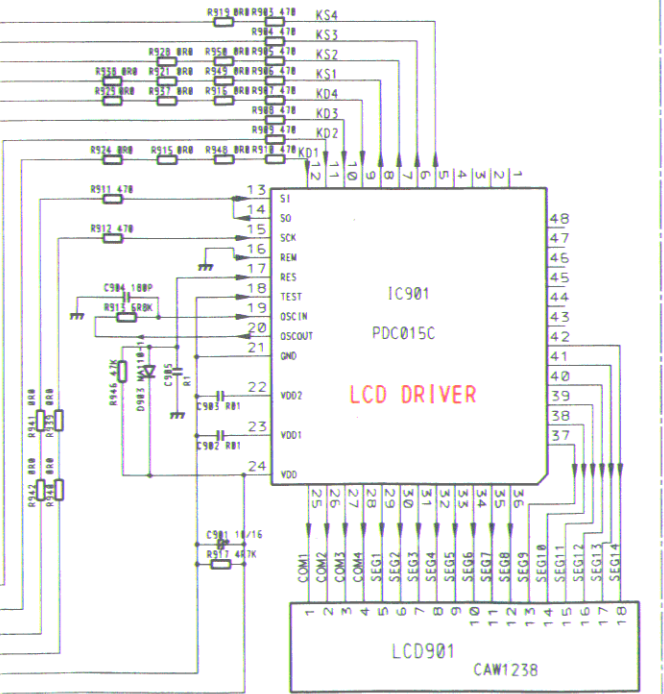


S901  
CS01



NOTE:  
 □ Symbol indicates a resistor.  
 No differentiation is made between chip resistors and discrete resistors.  
 ▭ Symbol indicates a capacitor.  
 No differentiation is made between chip capacitors and discrete capacitors.  
 Decimal points for resistor and capacitor fixed values are expressed as:  
 2.2→R22  
 0.022→R022

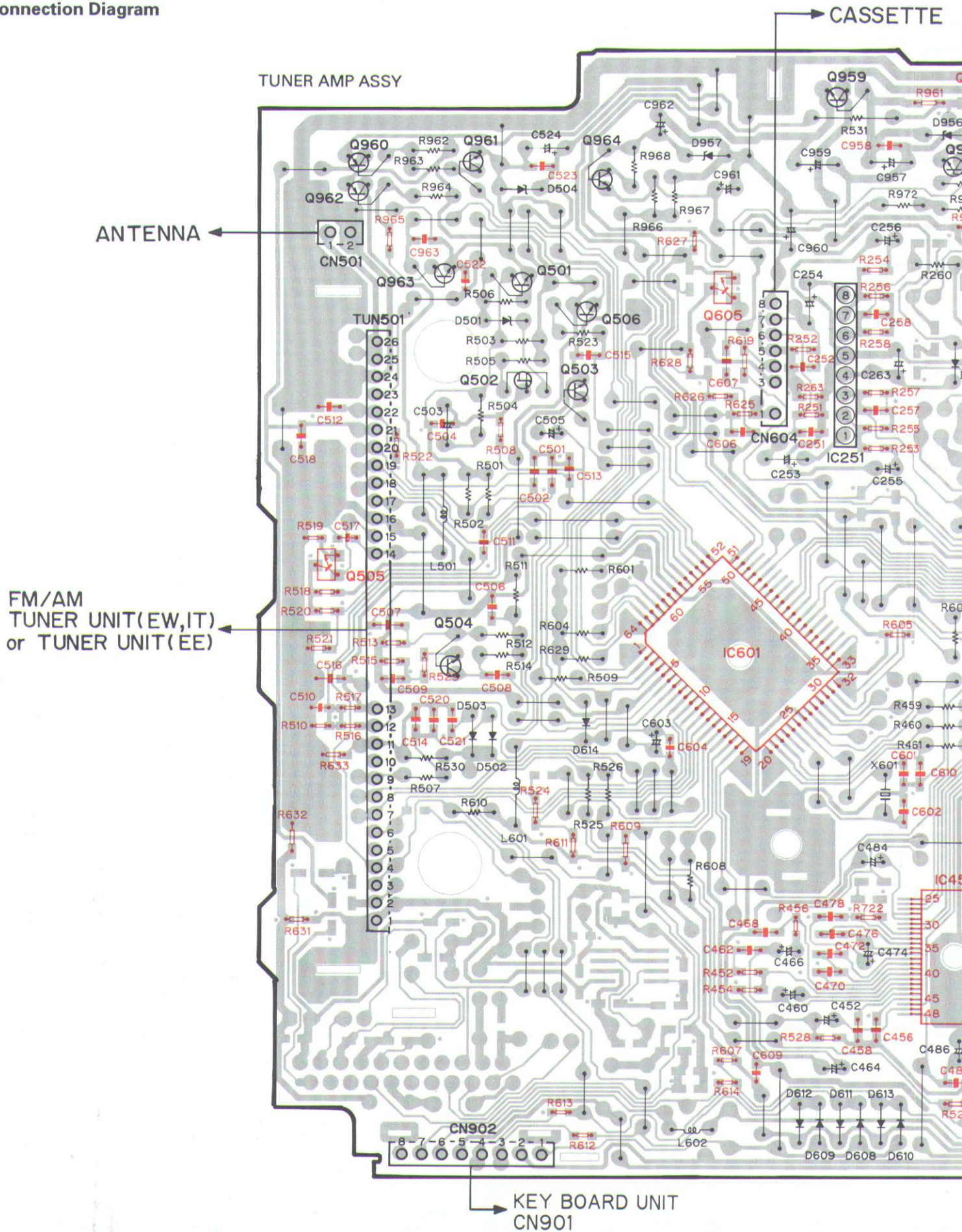
KEY BOARD UNIT



S901-916 IL901-903.CEL1418 EW,EE  
 CSG1058 .CEL1421 IT

Fig.9

● Connection Diagram



FM/AM  
TUNER UNIT(EW,IT)  
or TUNER UNIT(EE)

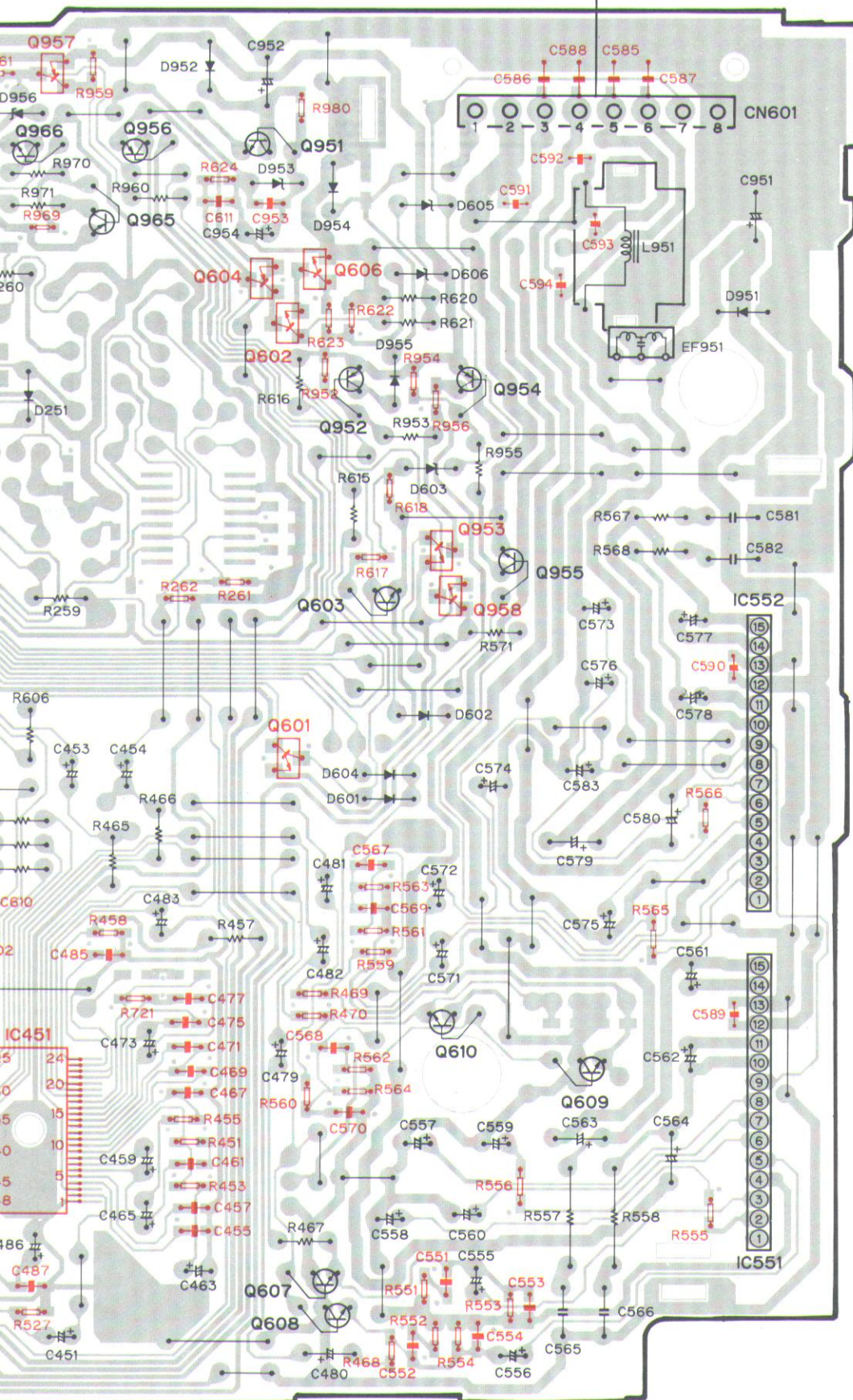
ANTENNA

CASSETTE

KEY BOARD UNIT  
CN901

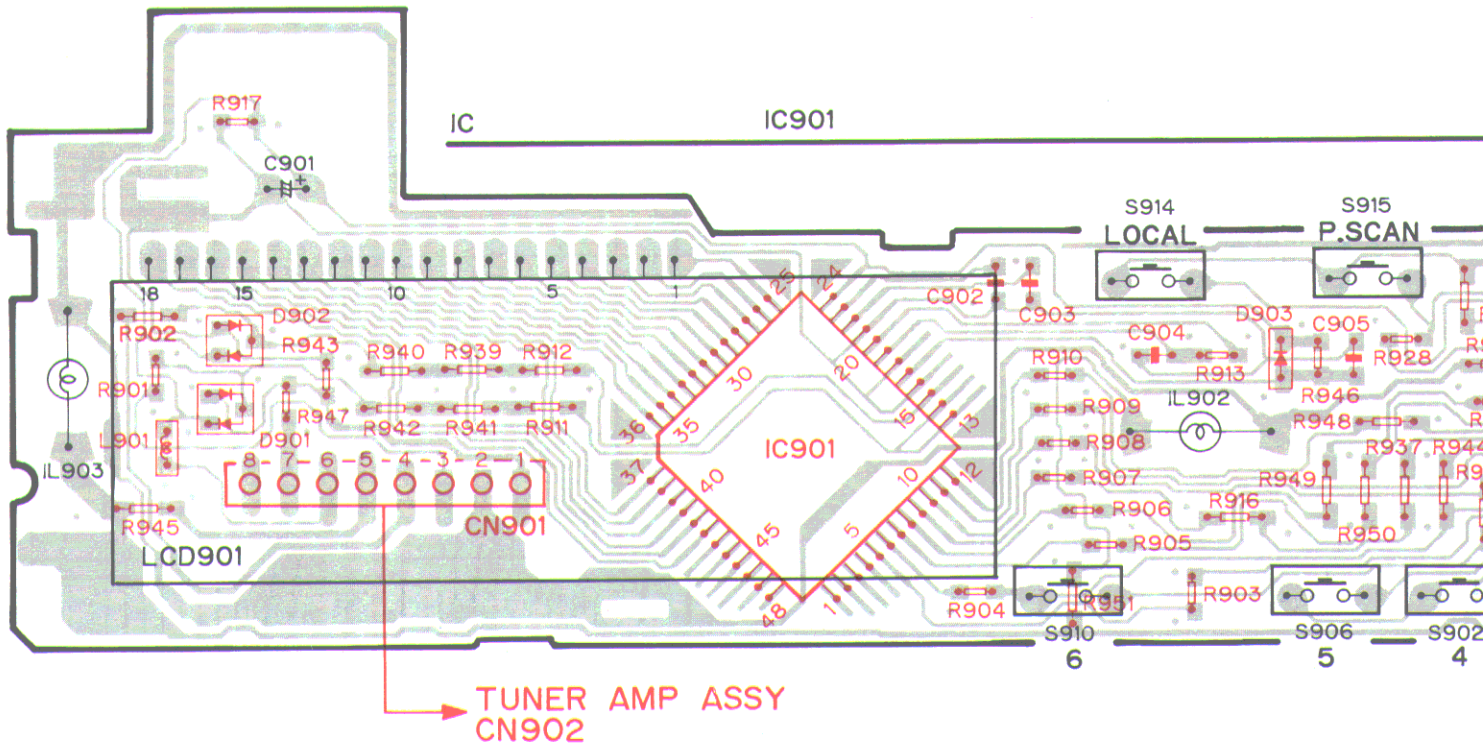
E MECANISM ASSY (P.C. BOARD(A))

CORD ASSY



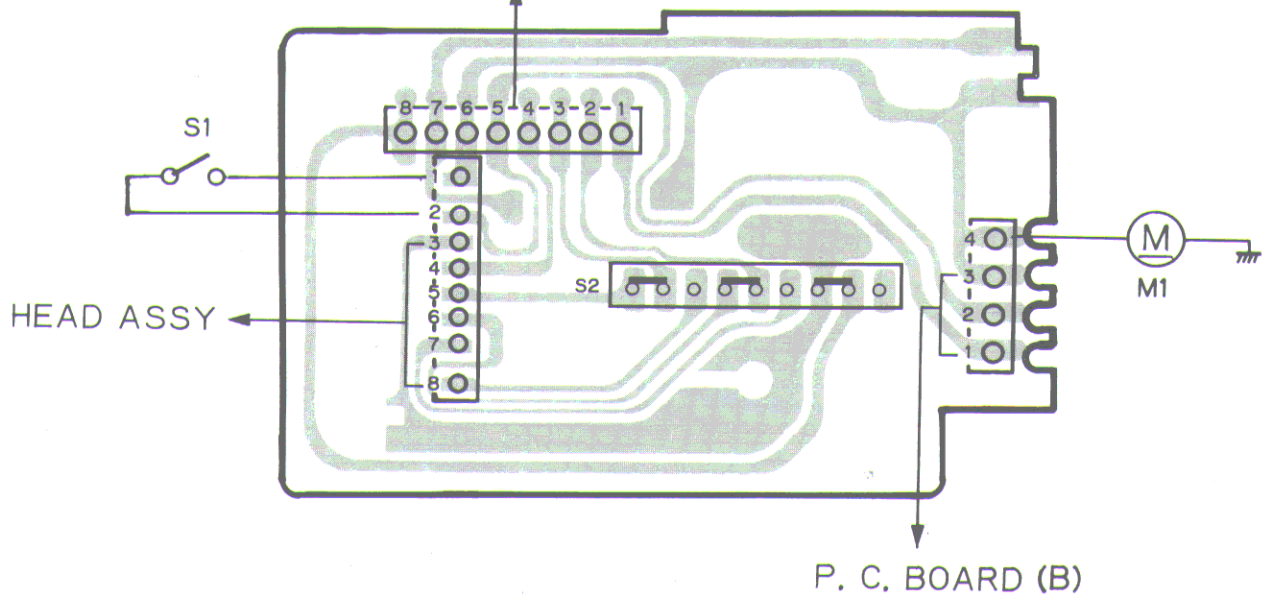
ADJ	IC, Q
	Q959 Q957
	Q960 Q961
	Q966 Q956
	Q964 Q951
	Q962
	Q965
	Q963 Q501
	Q604 Q606
	Q605 Q602
	Q506 IC251
	Q952 Q954
	Q502 Q503
	Q953 Q955
	Q603 Q958
	Q505
	IC552
	Q504 IC601
	Q601
	Q610
	Q609
	IC451
	IC551
	Q607
	Q608

KEY BOARD UNIT

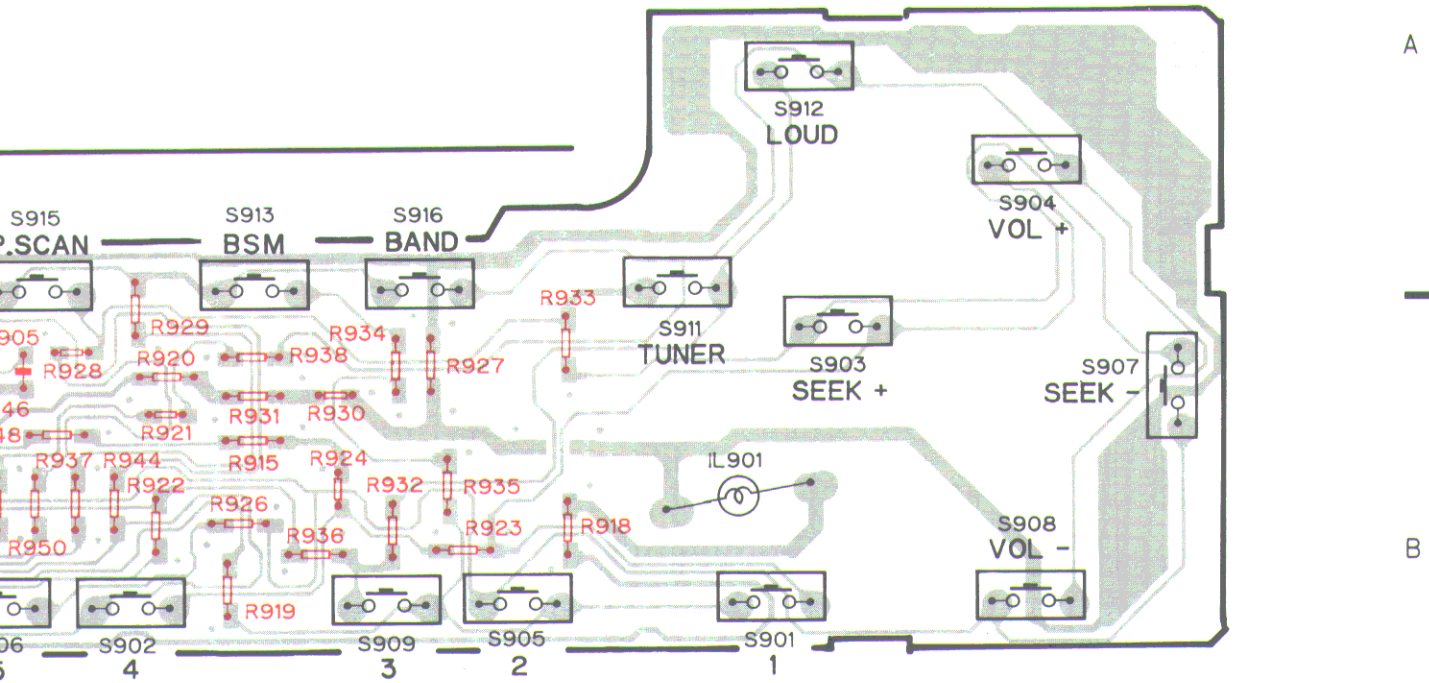


P.C.BOARD (A)

TUNER AMP ASSY CN604







P.C. BOARD (B)

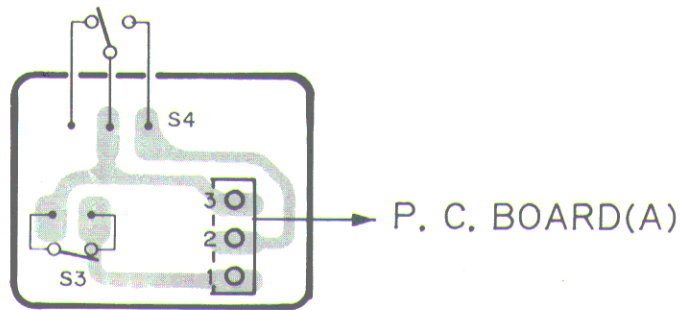
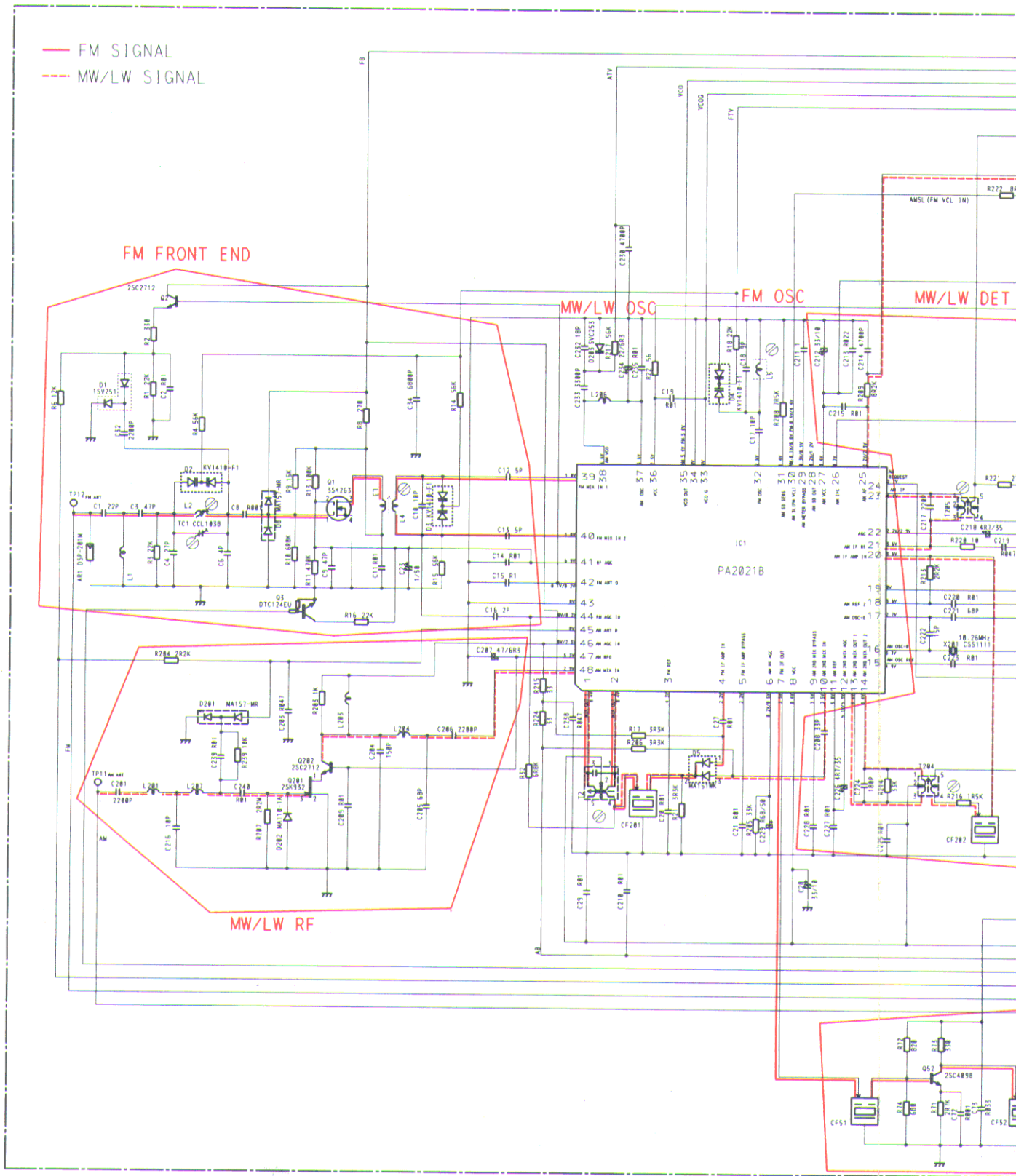


Fig.10

2.5 FM/AM TUNER UNIT(KE-2900SDK/GR, KE-2900/EW,IT, KE-1900SDK/GR, KE-1900/EW,IT)

● Circuit Diagram

FM/AM TUNER UNIT



NOTE

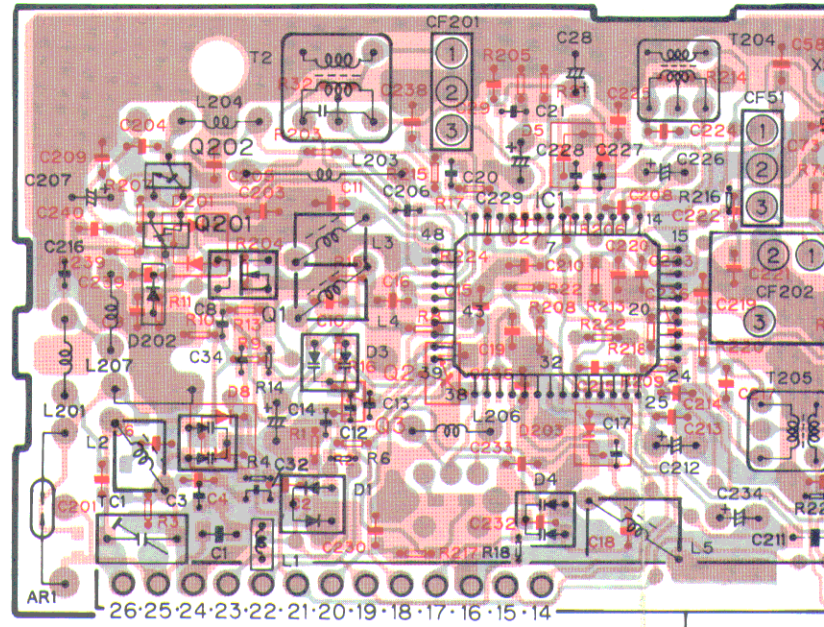
- Symbol indicates a resistor.  
No differentiation is made between chip resistors and discrete resistors.
- ||— Symbol indicates a capacitor.  
No differentiation is made between chip capacitors and discrete capacitors.

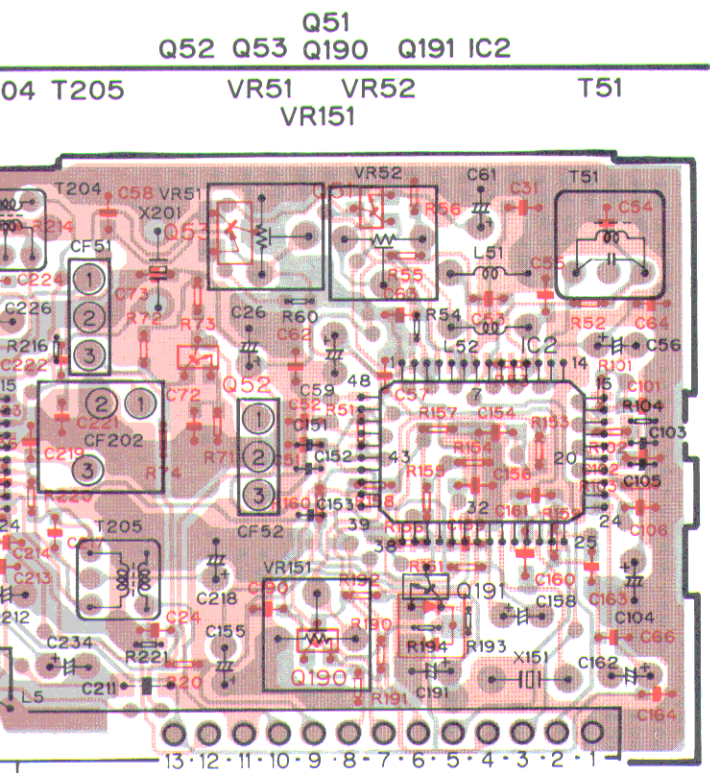
Decimal points for resistor and capacitor fixed values are expressed as:  
2.2→R2  
0.022→R022



● Connection Diagram

IC, Q	Q202	Q201	Q1	Q3	Q2	IC1
ADJ	TC1	L2		T2		T204
				L4		T205
						L5



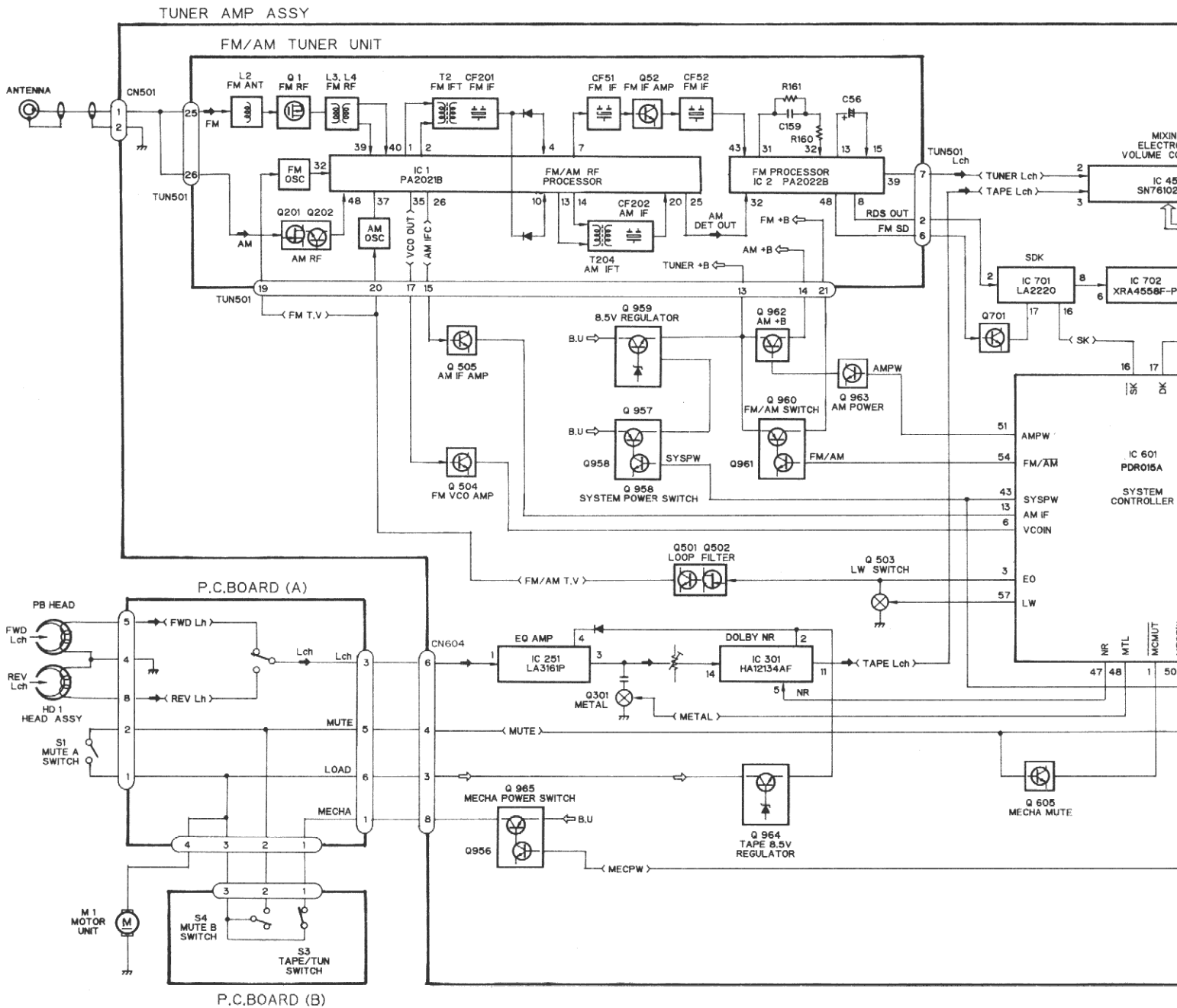


TUNER AMP ASSY  
TUN501

Fig.12

# 5. BLOCK DIAGRAM

● KE-2900SDK/GR



A

B

C

D

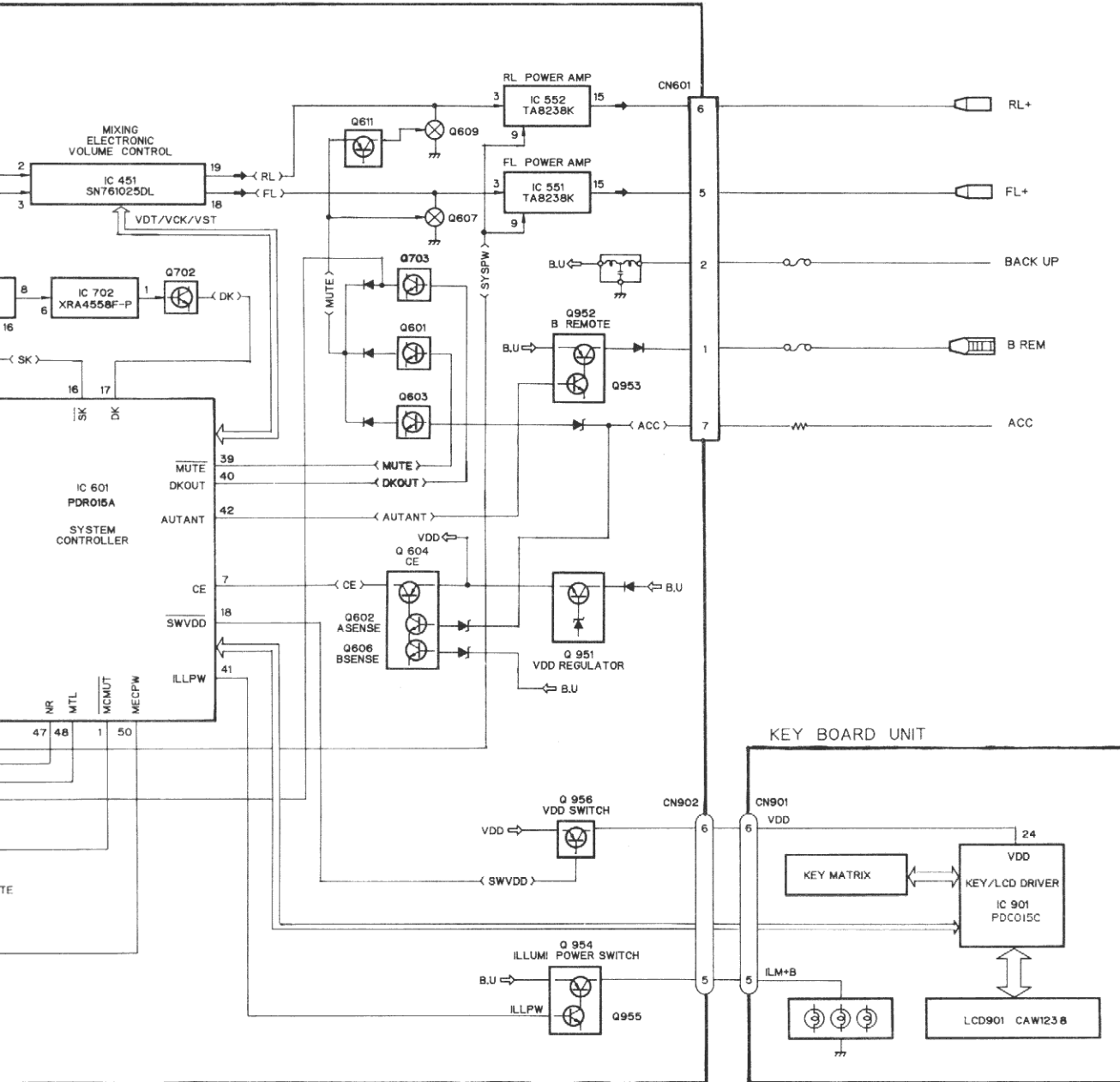


Fig.17